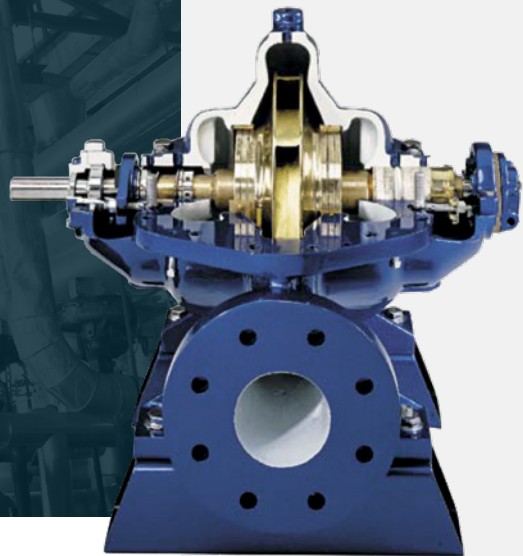




# HORIZONTAL SPLIT-CASE SINGLE-STAGE DOUBLE- SUCTION PUMP

Series AE



Using the latest technology, Peerless Pump engineered the AE Series pump to accommodate a variety of applications. The single-stage, double-suction, horizontal split-case pump comes in 42 different hydraulic configurations and 25 pump sizes. Discharge sizes range from two to ten inches. The AE has a wide selection of hydraulic performance envelopes, multiple mechanical configurations and several material options.

## FEATURES

**The casing material** is a minimum of class 35 cast iron. To provide permanent alignment of bearings and all rotating parts, Peerless Pump casts the bearing bracket supports as a part of the lower casing half.

**Renewable bronze casing rings** are doweled and shouldered in the casing.

**The double-suction impeller** is a single cast-bronze piece. Dynamic balancing gives the impeller vibration-free hydraulic and mechanical performance. The balancing also provides a longer bearing life and mechanical seal life. Keyed to the shaft with an 18-8 stainless steel key, the impeller aligns axially with threaded shaft sleeves.

**Grooved impeller skirts** (in combination with casing rings) extend the life of critical clearances and increase the mean time between preventative maintenance (MTBPM).

**Peerless Pump standard mechanical seals** are mounted over a bronze shaft sleeve and rated for temperatures up to 225°F.

**The optional packed stuffing boxes** hold a minimum of five packing rings. Split glands facilitate removal for repacking. The gland bolts are swing-type and made of steel with 18-8 stainless steel nuts. Water seal piping and lantern ring are optional. As standard, the upper casing features a tapped and plugged seal flush connection.

**Replaceable bronze shaft sleeves** protect the carbon steel shaft through the stuffing box. The shaft sleeves extend beyond the mechanical seal flanges (or packing glands) for maximum shaft protection. O-rings seal the sleeves. The shaft and shaft sleeves are available in stainless steel.

**The bearings** are single-row, deep-groove ball-type and grease-lubricated. Their average life is 100,000 hours. Double-row, outboard thrust bearings and oil lubrication are optional.

**ANSI NSF 61 & 372** safe drinking water and low-lead certified.

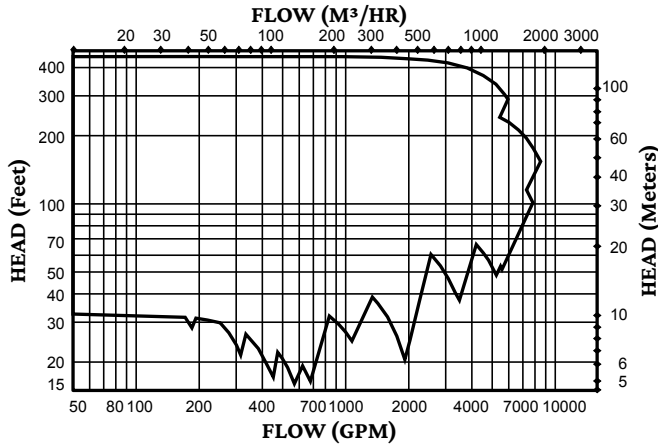
## APPLICATIONS

- Water and other non-abrasive fluids
- From small, single-pump commercial installations to large, multi-pump municipal water supply systems
- Agriculture
- Industrial
- Building trade
- Energy
- Fire protection
- Municipal
- Process

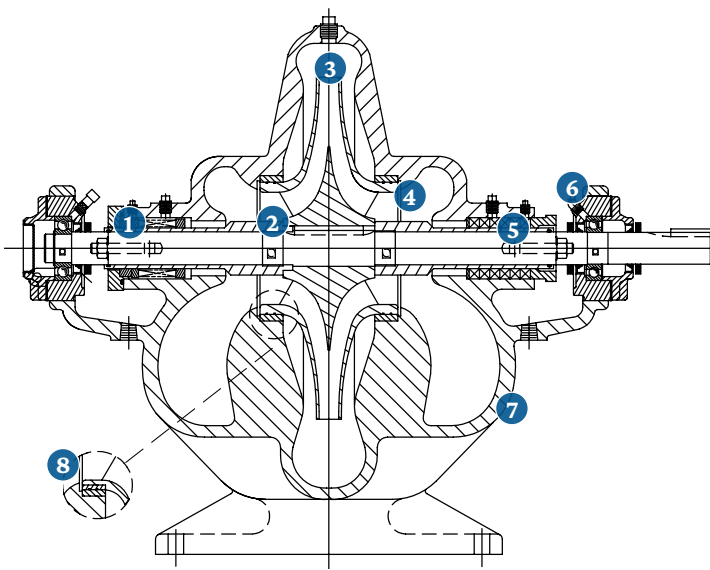
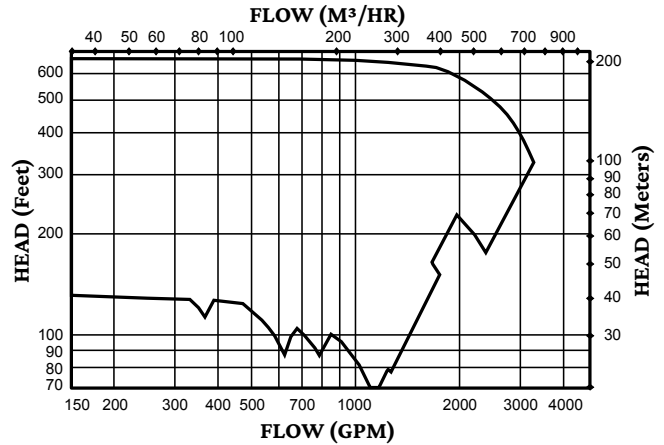
## SPECIFICATIONS

<b>Capacities</b>	Over 8,000 gpm (1,817 m <sup>3</sup> /h)
<b>Head</b>	Up to 675 feet (206 meters)
<b>Pressure</b>	Up to 510 psi
<b>Horsepower</b>	Up to 550 hp (410 kW)
<b>Temperature</b>	Up to 250°F (121°C)
<b>Drives</b>	Motors, engines, steam turbines, combinations
<b>Liquids</b>	Water, clear liquids
<b>Materials</b>	Cast iron, bronze fitted as standard. Other materials are available.

## AE SERIES RANGE — 1750 RPM



## AE SERIES RANGE — 3550 RPM



**1 Mechanical Seal**  
(Standard)

**2 Cartridge Seal Assembly**  
(Optional) Provides positive shaft sealing at all operation conditions.

**3 Impeller**  
Dynamic balancing extends the operation life of the pump.

**4 Shouldered Case Rings**  
Provides positive position control to reduce recirculation losses for improved efficiencies.

**5 Stuffing Boxes**  
Mechanical seals are standard. Packing is optional. Field conversion can be made with minimal effort.

**6 Grease Lubrication**  
(Standard)

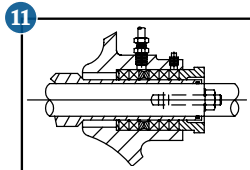
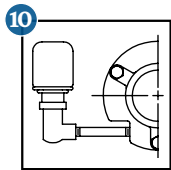
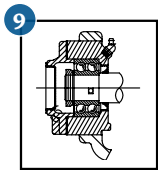
**7 Case Assembly**  
Higher-quality pump castings with 35,000 psi or better tensile strength cast iron are standard. 250# flange thickness and diameter with 125# or 250# drilling standard on most models.

**8 Grooved Impeller Rings**  
Grooved impeller ring (optional construction) or grooved impeller skirt (standard). Reduces recirculation losses better than standard impeller skirts. Maintains maximum pump efficiency for extended time periods.

**9 Bearings**  
Grease lubrication is standard. Oil lubrication is optional. Can be converted in the field with minimal effort. Average bearing life of 100,000 hours.

**10 Grease Lubrication**  
(Optional)

**11 Packing**  
(Optional) With or without lantern ring.



Peerless Pump designs tough, versatile products to meet your pumping needs. The AE Series delivers variety, durability, standardized options and configurations unequalled in the industry.

For more information, contact your local authorized Peerless Pump distributor or visit [peerlesspump.com](http://peerlesspump.com)



2005 DR. MARTIN LUTHER KING JR. ST.  
INDIANAPOLIS, IN 46202

P 317.925.9661 F 317.924.7388 [PEERLESSPUMP.COM](http://PEERLESSPUMP.COM)



Flyer-081020  
This flyer's contents subject to change without notice.  
© Peerless Pump Company